

Hi-CON
Smart Controller



Hi-CON is a SMART CONTROLLER based on the soft-PLC and optimized remote I/O.

This smart controller provides:

- ✓ Reliable operation
- ✓ Customized and user-friendly interfaces
- ✓ Connections with Various Field bus
- ✓ Safety Levels, SIL 2 or SIL 3
- ✓ Full support of IEC 61131-3

Additional functions with Remote Access

- Diagnosis:
Remote key parameters monitoring
- Remote & Predictive maintenance

Hi-CON provides various industrial field applications such as BWTS, FGSS, SCR, and any other plant or factory automation systems. In addition, it can replace the existing control system with the flexible configuration, as an optimized and efficient solution.

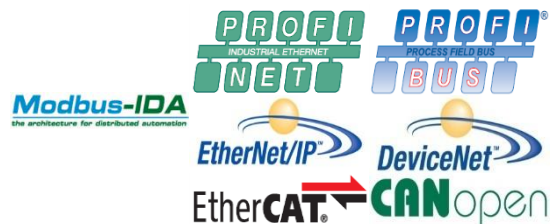
Features, options:

- ✓ Support various protocols
- ✓ Compact and Flexible configuration with Remote I/O
- ✓ Back-up CPU solution available



Available Field bus protocols:

CANopen; PROFIBUS DP V1; PROFINET IRT;
EtherCAT; Modbus TCP; Ethernet/IP;
DeviceNet



Available I/O components:

D/I; D/O; A/I ; A/O; Field bus coupler; Functional Modules; SIL-Power Feed


Type approved components:


BV, DNV, RINA, Lloyd, ABS, KR
CCS



Tests and Type Approval Certificates for Maritime Application :

Report No: SGS-R19-0000-EN00
Page : 1 / 32





TYPE APPROVAL CERTIFICATE

Certificate No. : POH32453-AC001 Initial Approval : 12th June, 2019

Product : Touch Screen Control Cabinet

Manufacturer : Hyundai Welding Co., Ltd. Pohang Plant 2
99, Yeongilmansandan-ro 88beon-gil, Buk-gu, Pohang-si, Gyeongsangbuk-do, Korea


Product Description : Type : HWC-00-100 series
" See Appendix 1 "

Approval Condition : " See Appendix 1 "


THIS IS TO CERTIFY that the above-mentioned product has been approved in accordance with the relevant requirement of this Society's Rules and / or of the recognized standards as follows and entered in the "List of Approved Manufacturers and Type Approved Equipment".

Pt. 6, Ch. 2, Art. 301 of the Rules for Classification, Steel Ships.

This Certificate is valid until 11th June, 2024
Issued at Busan, Korea on 12th June, 2019



This certificate is signed electronically in accordance with IMO FAL_S/Circ.39/Rev.2. Validation and authentication of this certificate can be confirmed from "http://e-cert.krs.co.kr" by using the tracking No (ME19014632667) and certificate No.(POH32453-AC001).



KOREAN REGISTER OF SHIPPING

Jung Eun Zi

General Manager of
Marine & Ocean Equipment Team

Note: 1. This certificate will be valid subject to complying with the approval conditions described on this certificate and/or on the Rules of this Society.
2. This certificate will be voided from the expiry date of amendment unless the extension or renewal has been granted to the applicant or the manufacturer.
3. Any significant modification or change in design or construction to the above product without approval from this Society will render this certificate invalid.
4. Should the specific technical regulations or standards be amended during the validity of this certificate, the product is to be re-approved by this Society in accordance with the requirements as amended.

Republic of Korea

Approval: 2014

ures(IP44)

provided by client.

Manager
o, Hyung-kun

ut the express written permission.

March 20, 2019.

laboratory

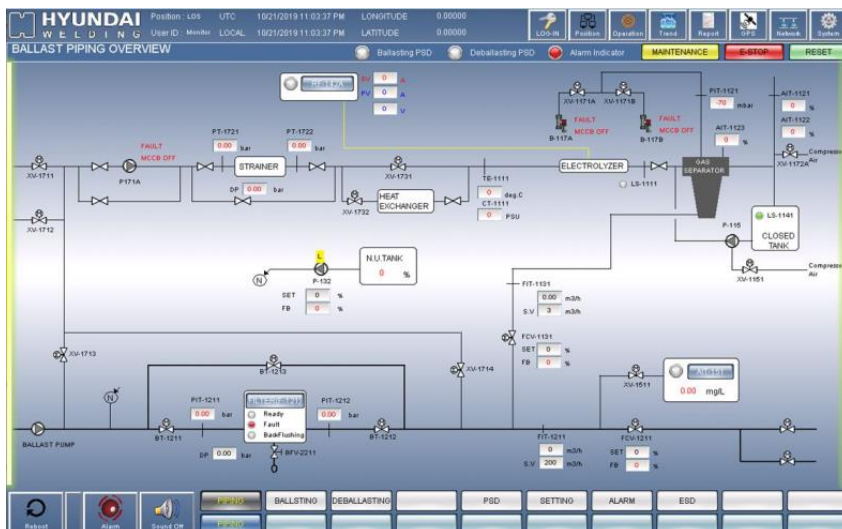
- Test Standard

- IACS UR E-10: 2018(REV.7)
- USCG 46 CFR 162.060-30

- Test Type

- Vibration Test
- Cold/Dry heat Test
- Damper heat Test
- Inclination Test
- Power supply variation
- EMC Test
- IP 44

Project example: Human-Machine Interface



Global Network



For BWTS only,
Rotterdam, Houston, Singapore, Korea



Overseas Branches
23 offices in 14 countries

Category	Work field	E-mail or address	Telephone
Sales	Quotation, Training	bwts-sales@hyundaiwelding.com	+82-52-283-6903
Technical	Design, Technical support	bwts-tech@hyundaiwelding.com	+82-52-283-6962
Customer Service	Commissioning, After-sales service	bwts-cs@hyundaiwelding.com	+82-52-283-6926
Head Office	-	Wework BLDG, 507, Teheran-ro, Gangnam-gu, Seoul, Korea	+82-2-6230-6042
Ulsan Engineering Center	Technical Center	406 Good prime I building, 641 Jongga-ro, Jung-gu, Ulsan, Korea	+82-52-283-6900
Pohang Factory	Manufacturing, FAT, Training center	88beon-gil 99, Yeongilmansandan-ro, Heunhar-eup, Buk-gu, Pohang, Korea	+82-54-260-0634

